

## Safety

---

Please read following concise rules. Without regard to it, danger or law-violation may be resulted in.

### 1. Boot the PC Safely

Don't boot PC in prohibition of using wireless device or meeting interference or danger from device use.

### 2. Be careful of the traffic firstly

Please observe local laws & rules, try to drive car with both hands by considering traffic safety firstly.

### 3. Interference

All wireless devices may be interfered, then affecting PC capability.

### 4. Use qualified maintenance

Only qualified maintainers can install or repair the device.

### 5. Accessories and battery

Use authorized accessories and batteries. Do not connect incompatible products.

### 6. Water resistance

Please keep the device dry as the device doesn't have waterproofing quality.

## Appearance

---

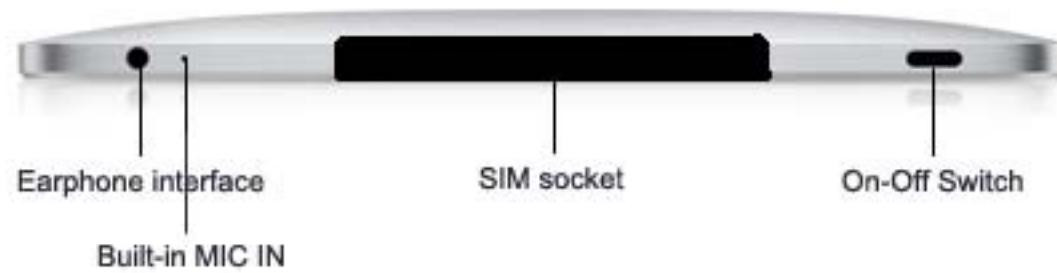
### Front view



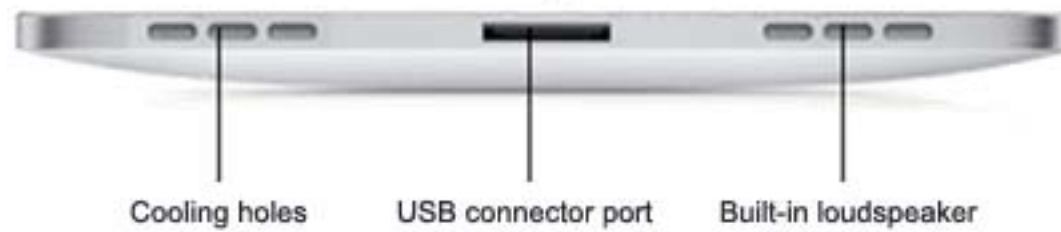
## Appearance

---

### Top view



### Bottom view



## Appearance

---

### Left view



### Right view



## Accessories

---

### USB expansion

can expand to 3 standard  
USB interfaces



## Basic Operation

---

### 1. Inset/pop SIM card

Inset SIM card (metal face towards top) into 3G SIM slot, just like the sense of spring being locked. Pressing SIM card to inserted direction firstly and then pull out SIM.

Notice: Please close PC power during insert/pop SIM card; otherwise, the machine will be damaged.

### 2. Connect power(charge adapter)

Connect charge adapter to power adapter. After coonecting the adapters properly, press power switch key for 3-5 seconds until machine boot.

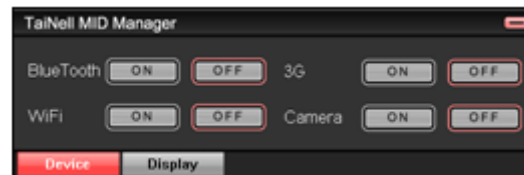
Do not connect the built-in battery into adapter under the condition of high battery. Boot the PC directly via switch key. Connecting power adapter to charge battery while the battery is low.

## Basic Operation

---

### 3. MID Manager Setup

(1) Default setting of MID manager--automatic startup during boot. Click MID manager ico under the bottom-right of windows, you will see the following image (device options):



Notice: MID manager display equipments will be different to various types of device configurations.

(2) Click corresponding "On/Off" to start or close corresponding equipments. Default is On for g-sensor and Off for other devices.

(3) Double-click "MID Manager" to switch Chinese-English interface.

(4) Click "Display" to pop-up display options.



The screen brightness can be controlled via drawing sliders or clicking +/- buttons of both sides.

## Basic Operation

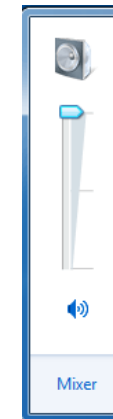
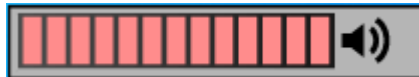
---

Notice: The device will consume electric power without use after boot. Suggest to close unused devices by clicking “close”, adjust backlight to proper lightness so as to increase battery endurance time greatly.

### 4. Volume control

(1) Click the volume icon in the status column of desktop  , drag arrowhead green icon up and down to realize the volume up/down.

(2) Adjust volume up/down via volume control key. Following slider will appear after pressing volume up/down key. The sliding red progress bar will be increased if press volume up key and be lessened if press volume down key.



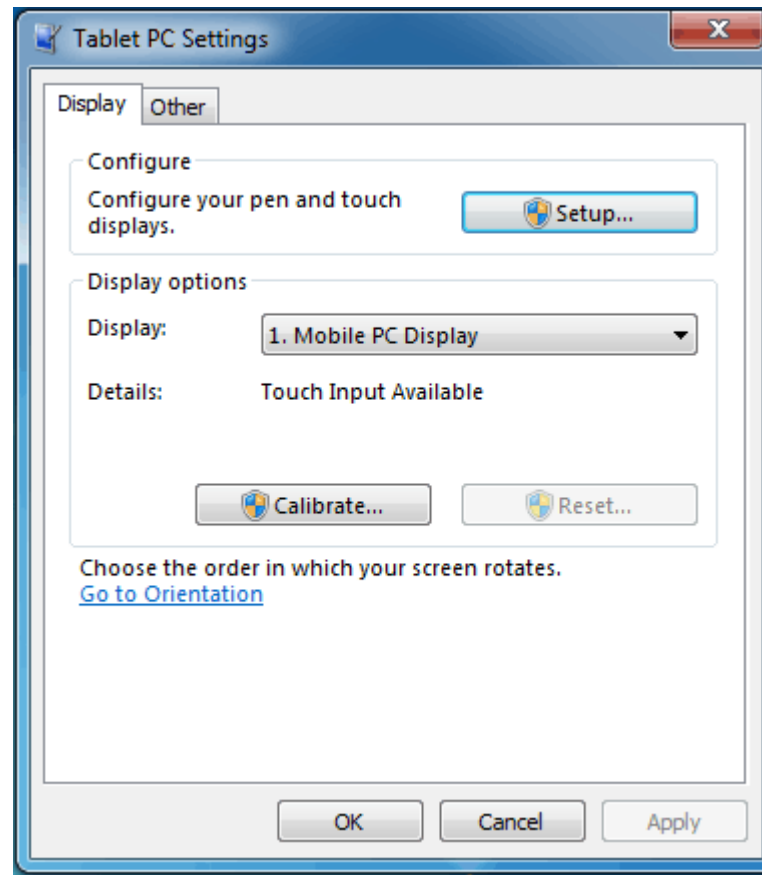


## Basic Operation

---

### 5. Touch screen adjustment

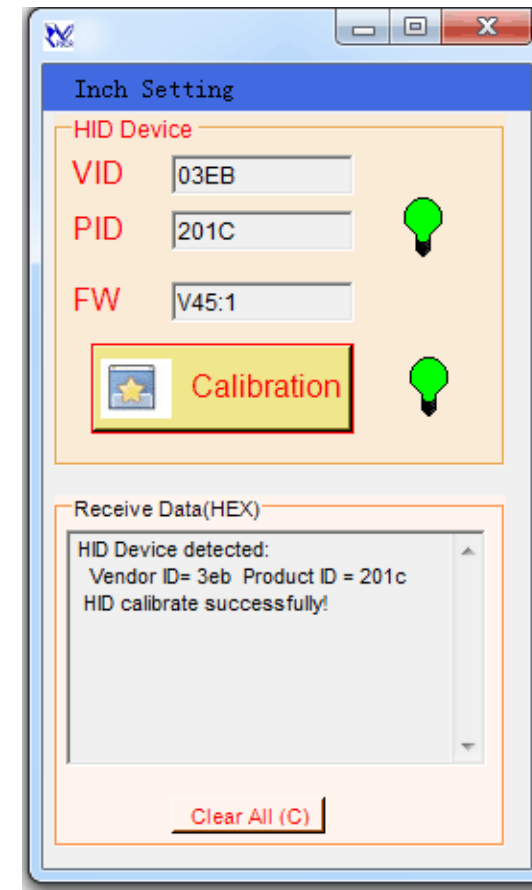
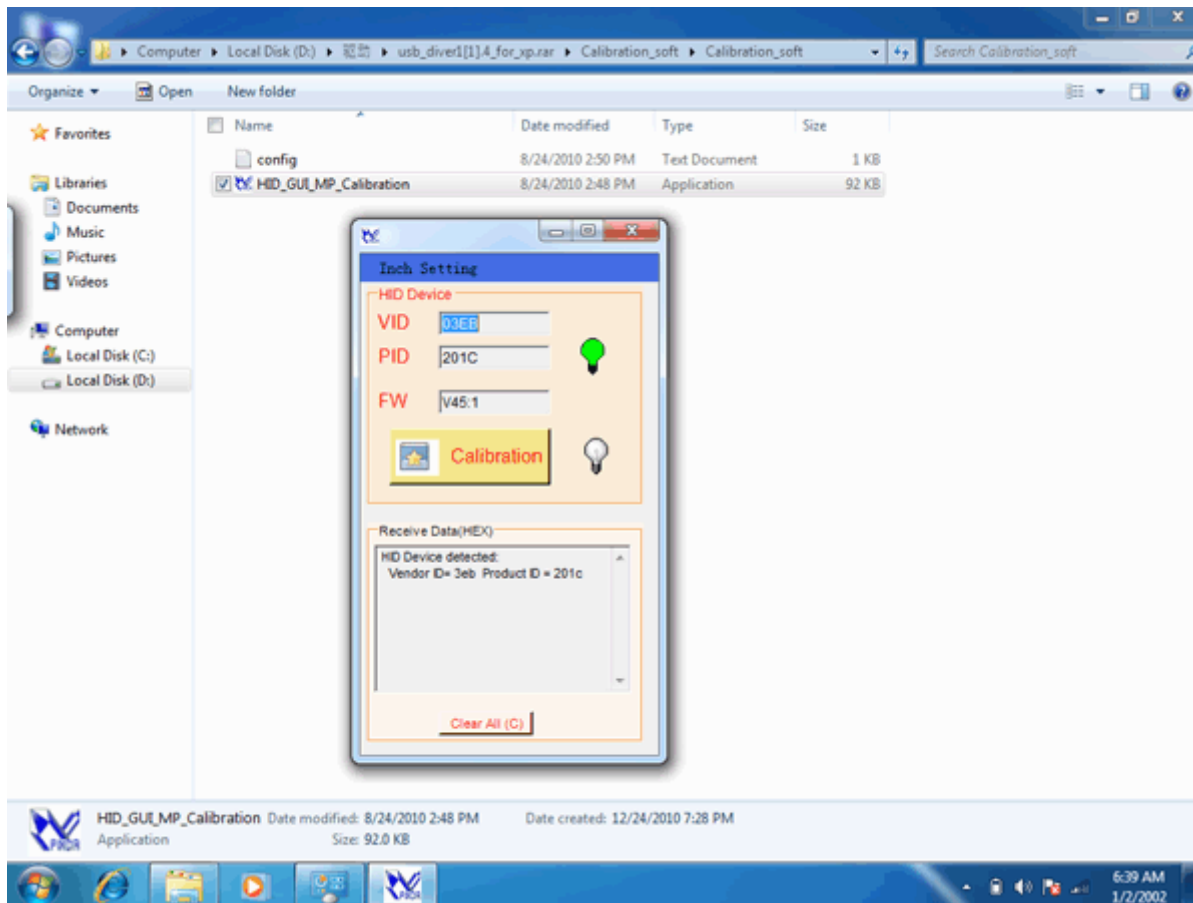
(1) Open control panel to change view modes—from the default classified view mode to big ico instead. Select Tablet PC setup, then following interface will appear. Touch screen will be adjusted via clicking “adjustment”.



## Basic Operation

(2) Adjust touch screen via the attached calibration software.

Open the calibration software to display left-below emendation interface. Adjustment will be finished if appearing right-below interface after clicking calibration—Calibration indicator being green and prompt HID calibrate successfully!

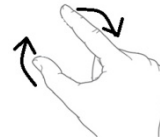
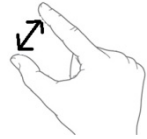


## Basic Operation

---

### 6. Multi-point touch experience of capacitive screen

Our capacitive screen supports multi-point touch, easy to realize image zoom out and rotation via two-finger shift while viewing pictures.



## Basic Operation

---

### 7. Virtual keyboard operation

(1) Touch the screen blank via fingers, a rectangle ico will appear at the upper right of screen; click this ico and virtual keyboard will appear. While editing characters, click editing area to pop-up cutdown virtual keyboard ico, then click the ico to callout virtual keyboard. This keyboard supports multi-point operation—“!”character will appear if press the shift+1 concurrently, being to be shifted, enlarged and lessened if control the keyboard edge via mouse or finger. Its functions are nearly identical to that of ordinary keyboard. Input operation can be realized via clicking the keystroke of touch screen (soft keyboard is reflected from below chart).



## Basic Operation

---

### (2) Special functions of soft keyboard

#### I. Handwirting

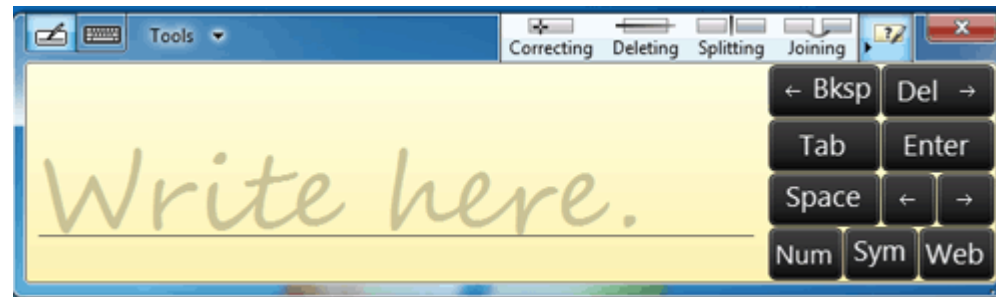
#### II. Button selection

#### III. Setup soft keyboard

#### IV. Shift input method

#### V. Close soft keyboard

Handwriting can be achived if pop-up following interface after click the “Handwirting” software ico of soft keyboard.



## Basic Operation

---

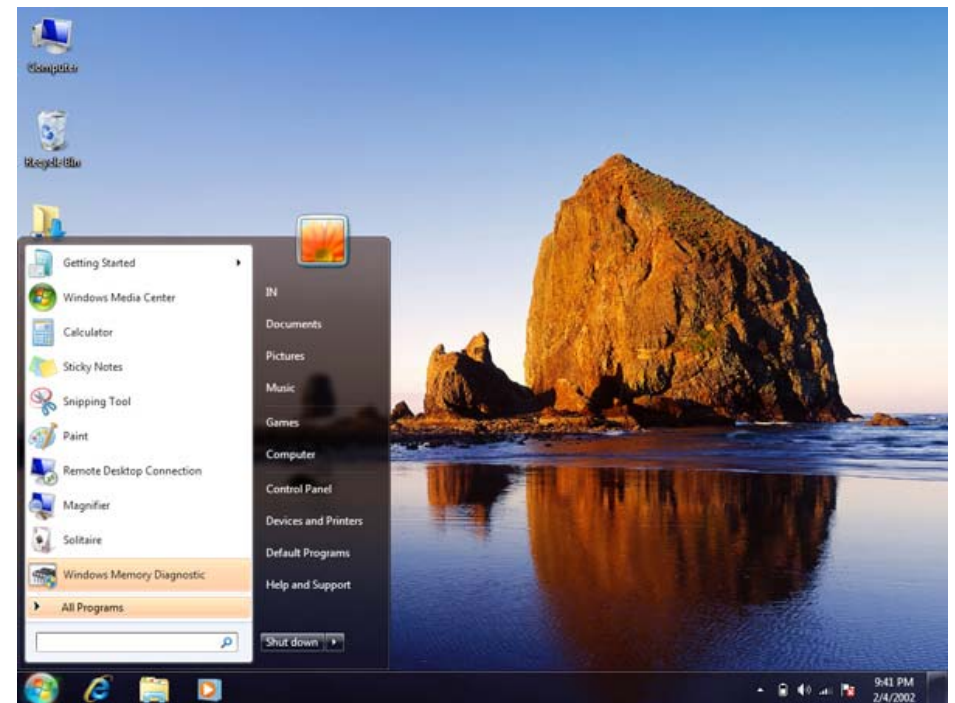
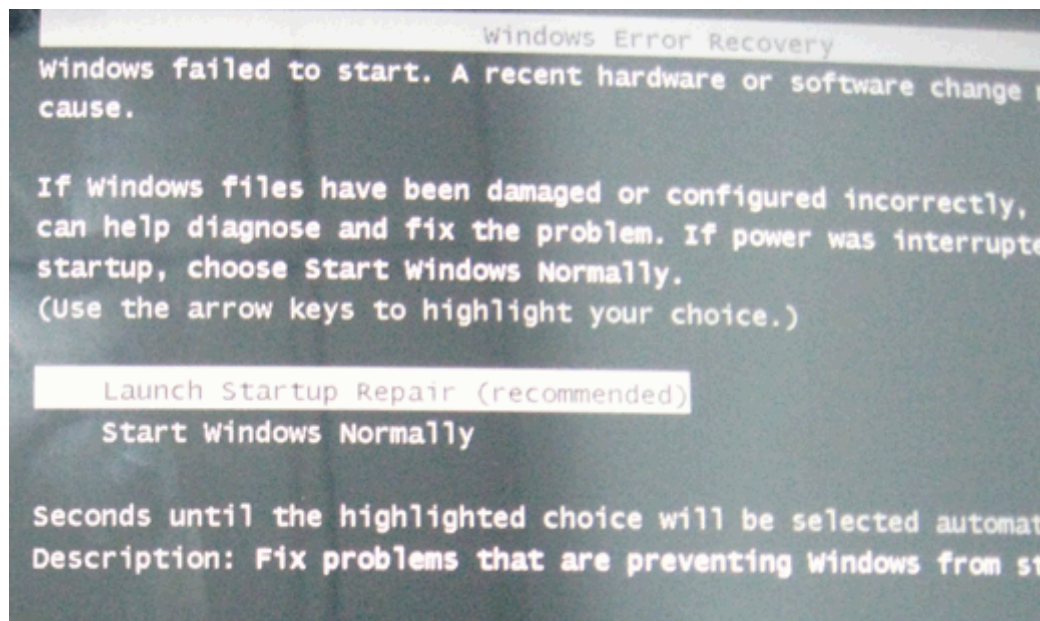
### 8. Keystroke introduction

The device has 4 shortcut keys with different functions as follows:

(1) Menu key-To realize ENTER key function under DOS system

As below chart, the PC will enter following DOS interface during the next boot if shut the device abnormally, letting users to select between restore and normal startup. Press Menu key to enter restore or normal startup status after selecting it.

Under normal win7 system, the Menu key is functioned to callout start menu, as reflected from below chart.



## Basic Operation

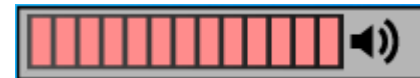
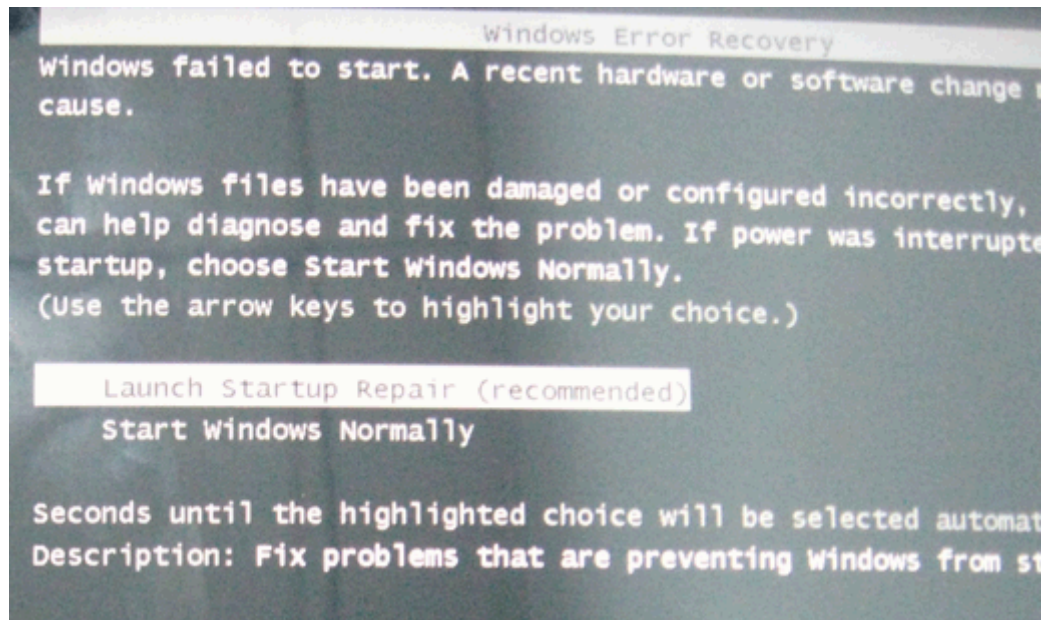
---

(2) Volume Up/Down Key—To realize the function of up-down selection key under DOS.

As below chart, the PC will enter following DOS interface during the next boot if shut the device abnormally, letting users to select between restore and normal startup. Press Volume Up/Down Key to enter restore or normal startup status after selecting it.

Under normal win7 system, the Volume Up/Down Key is used to control volume up/down; press the key will appear bottom-right volume progress bar.

PS: The PC may support dual systems, being able to select system from boot menu via volume key and enter selected system via Menu key



## Basic Operation

---

### 3. TP Lock Key-A slide switch.

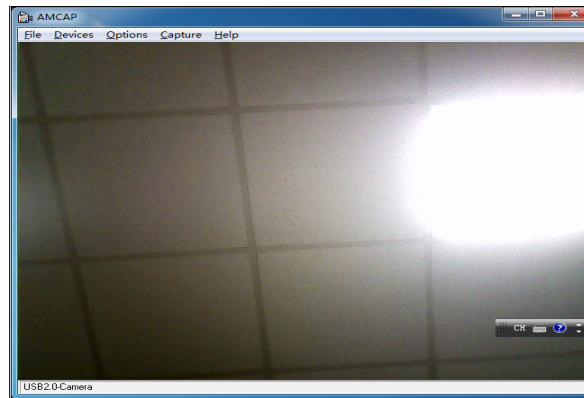
The touch screen function will be effective if dial the switch to right. User can dial it to left to close touch screen function if using external mouse.

### 4. Reset Key

With built-in battery, it's inconvenient to take down it. While meeting shutdown or needing to power failure after update BIOS, the PC can be shut down by pressing a needle object on the reset key, then boot can go on normally after shut down.

## 9. Open Camera

Win7 system doesn't bear the instrument of opening camera. The camera can be opened via other software(QQ video) or third-party software, such as amcap (as reflected from below chart).



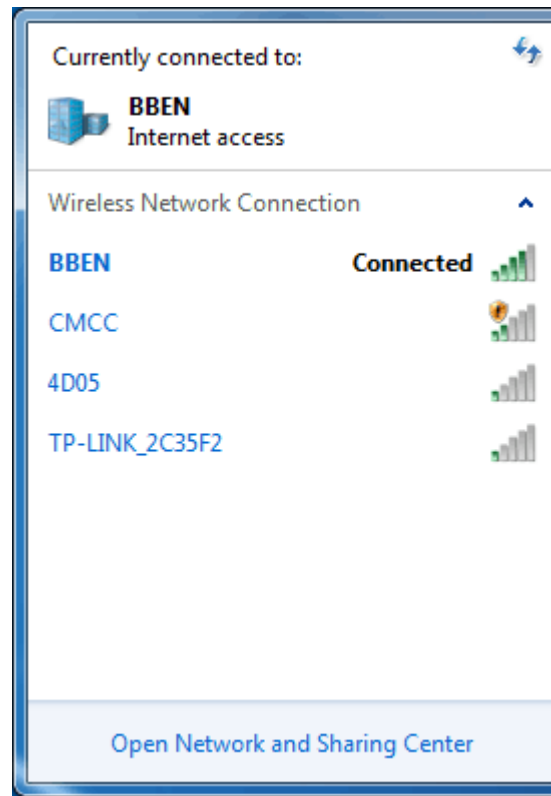


## Basic Operation

---

### 10. Connect WIFI

Setup “WIFI Wireless”of MID Manager to be “Open” condition, click the ico of desktop  status column , then searchable wireless network will be pop up. Click to  refresh current wireless network.  Represents current network can be connected for use, double-click one of the available network (as liming TPLink A8 of below chart) , and wireless network can be effective after click “connect”.

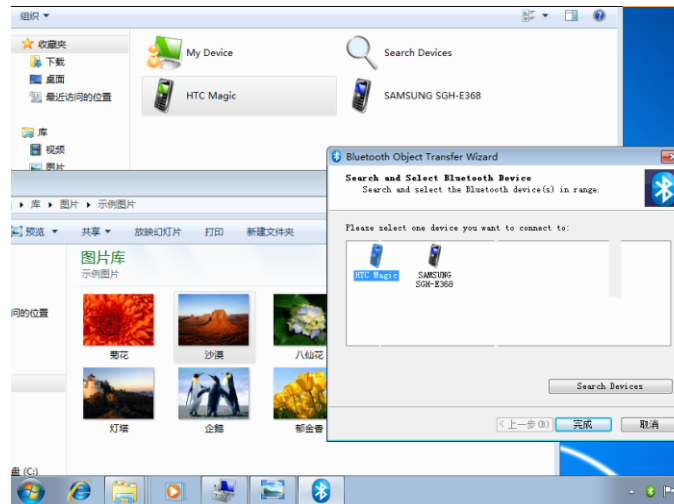


## Basic Operation

---

### 11. Connect Bluetooth

Setup “Bluetooth” of MID Manager to be “Open” condition, click the shortcut way of bluetooth ico on the desktop, then corresponding bluetooth terminal will be opened. Following is cut example of HIC mobile phone. HIC Magic can be found via bluetooth search. The bluetooth ico on the bottom right corner will be changed into green from blue after matching. Select one file (one picture) from the device, use right key to select and send via bluetooth. A dialog box will appear to let you select and send to specific bluetooth terminal. Click and press completion to realize the documents sent mutually between two bluetooth terminals.



## Basic Operation

---

### 12. 3G Connection

The device's 3G is B2B connecting way, currently supporting EVDO/WCDMA system modules. Specific setting is as follows:

- (1) Setup "3G Wireless" of MID Manager to be "Open" condition
- (2) A client terminal program will be set up on the desktop after installing 3G module drive.
- (3) Double-click the client program to appear the interface of below chart.
- (4) Click connect wcdma if SIM is open for 3G business, then Internet can get on via 3G card after connecting successfully/



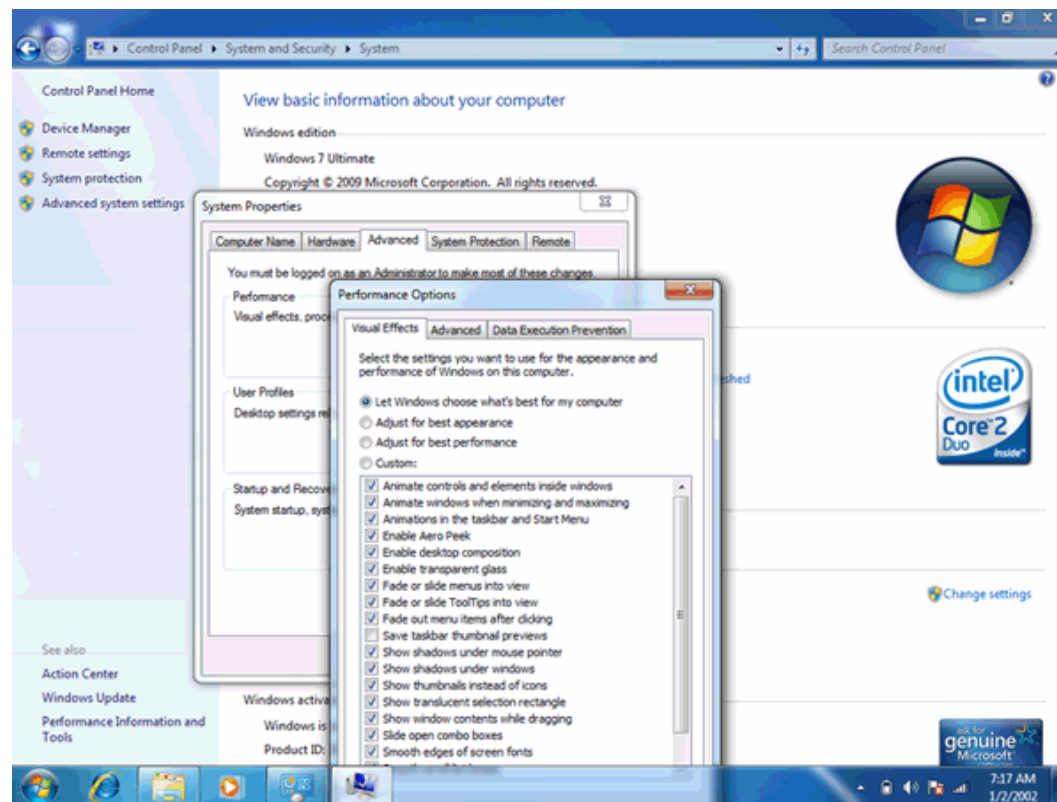
## Basic Operation

---

### 13. System Optimization

With many cartoons and lucent display effect, win7 system occupies great resource. Suitable styles can be adjusted between system appearance and performance via following setup:

- (1) Right-click My Computer-Select Properties-Advanced-Setup
- (2) Select to adjust to best appearance, best performance and define own appearance and performance under the interface of performance option.



## Basic Operation

---

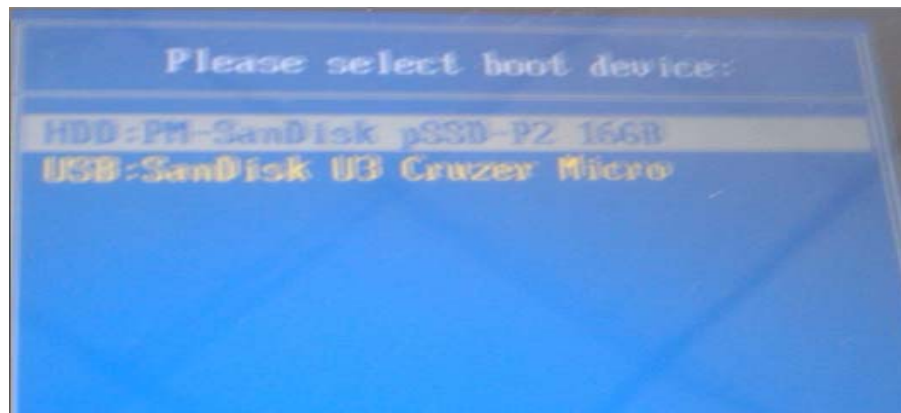
### 14. System Installation

The PC doesn't have CD-Driver. If wanting to install operating system, user can use USB driver or install via U disk after writing the system into U disk.

Connect external keyboard, press Esc key after shifting boot key, then select BOOT device after appearing below image:

HDD shows that start-up from hardware normally, being able to boot to operating system.

USB shows that start-up from USB device. If the USB device has system installation document, operating system can be installed after entering USB device.



## Specofications

---

|                   |   |
|-------------------|---|
| Operating Systems | Support Windows XP® / Windows 7®                |
| CPU               | Intel® Atom™ Z510 1.1GHz~Z530 1.6GHz            |
| Chipset           | Poulsbo US15W                                   |
| RAM               | On board DDR2 533/667 MHz 1G                    |
| Display           | 9.7-inch 1024x768 resolution With Touch Panel   |
| Memory device     | 16~32GB SSD                                     |
| Audio             | High-definition audio compliant                 |
|                   | Integrated Speaker & Integrated Microphone      |
| Communication     | Wi-Fi 802.11b/g                                 |
|                   | 3G Support (WCDMA / EVDO)                       |
|                   | Bluetooth                                       |
| Size              | 242mm x189mm x 14.8mm                           |
| Weight            | 660g  |
| Input/Output      | Touch Panel                                     |
| Battery           | 4 cell 7.4 V 3800mAh                            |
| Interface         | 1xdocking, Microphone&Earphone Jack, DC-IN Jack |
| Camera            | 1.3 Mega Pixels Camera                          |