

E27 Printer Demo User Manual

E27 Printer Demo User Manual

Yuhao Tian

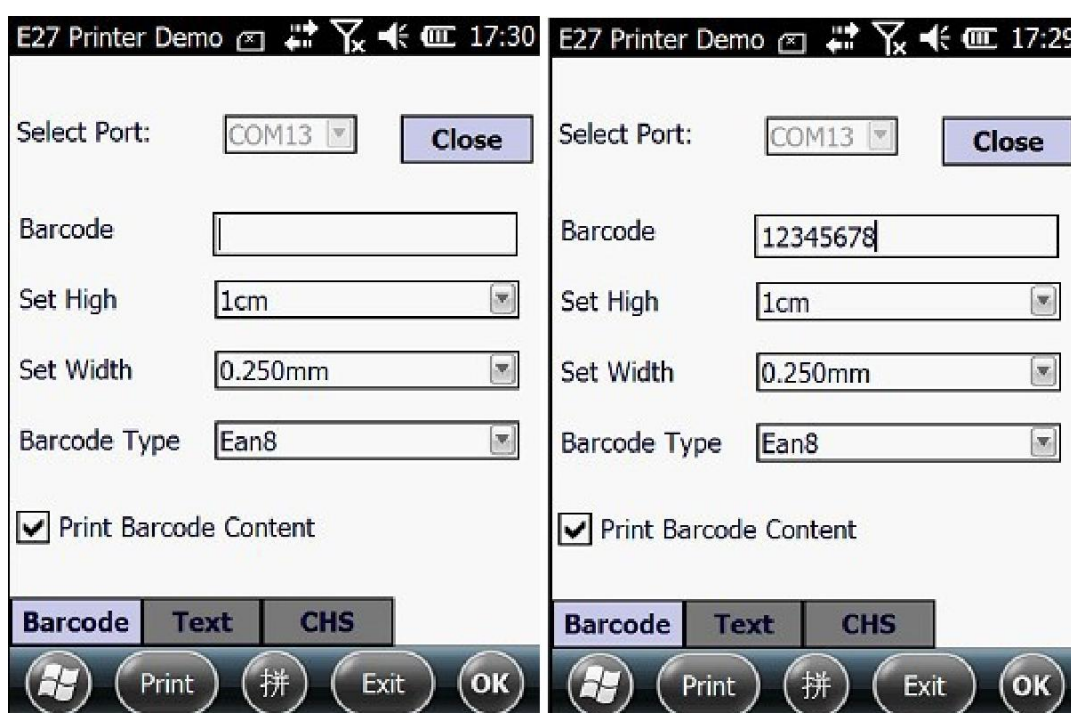
8/19/2014

E27 Printer Demo User Manual

E27 Printer is an optional accessory of TT35 device. Printer connects to device via serial port 13.

Along with the device, a printer demo application. Copy the 'TT35W E27printer.exe' into the device using the USB cable, and run the demo application on device. The interface will show as figure below.

Barcode TAB



Set the serial port as “COM13”, then press ‘Close’ (The ‘Close’ button will turn into ‘Open’ and the light on the printer is on). The length, width and type can be set by users. Then input the barcode content in the “Barcode Entry” text box, press “Print”. At this moment, the printer will print the barcode you have inputted in .

Port: Select COM 13.

Open/Close Button: Open/Close printer device.

Barcode: Enter barcode content.

Set High: Select barcode printing height.

Set Width: Select barcode bar printing width

Barcode Type: Decide the digit number of the barcode

Print Barcode Content: Check to print barcode content too.

Barcode Tab: Select Barcode TAB.

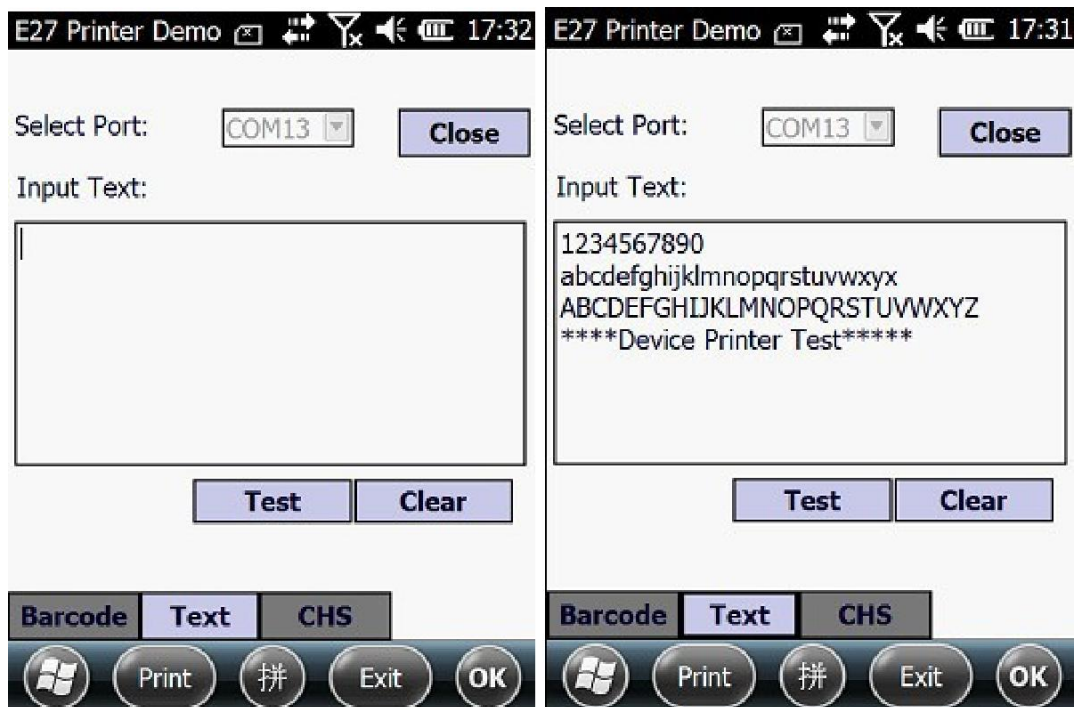
Text Tab: Select Text TAB.

Print Menu: Execute print action.

Exit Menu: Exit this demo application.

Text TAB

Click Text Tab to enter text print window as figure shown below.



Input Text: Input print content in text box for printing.

Clear Button: Clear content in input box.

Test Button: Print predefined test string.