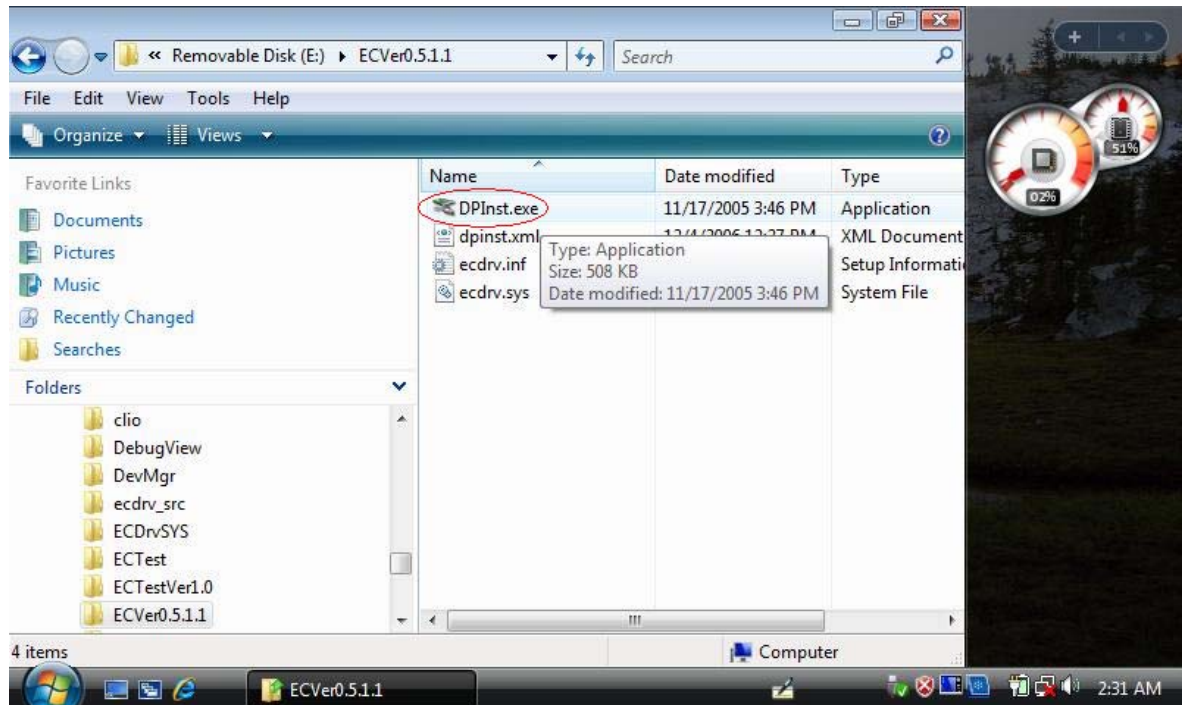
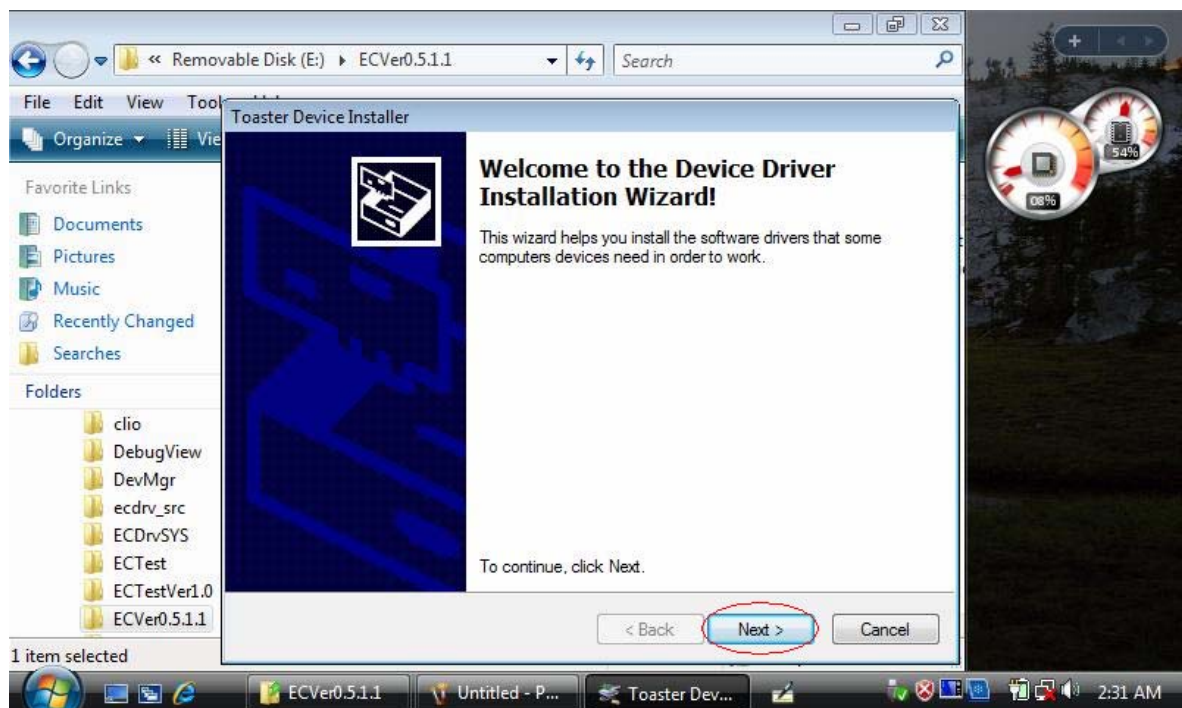


# How to Install EC Driver?

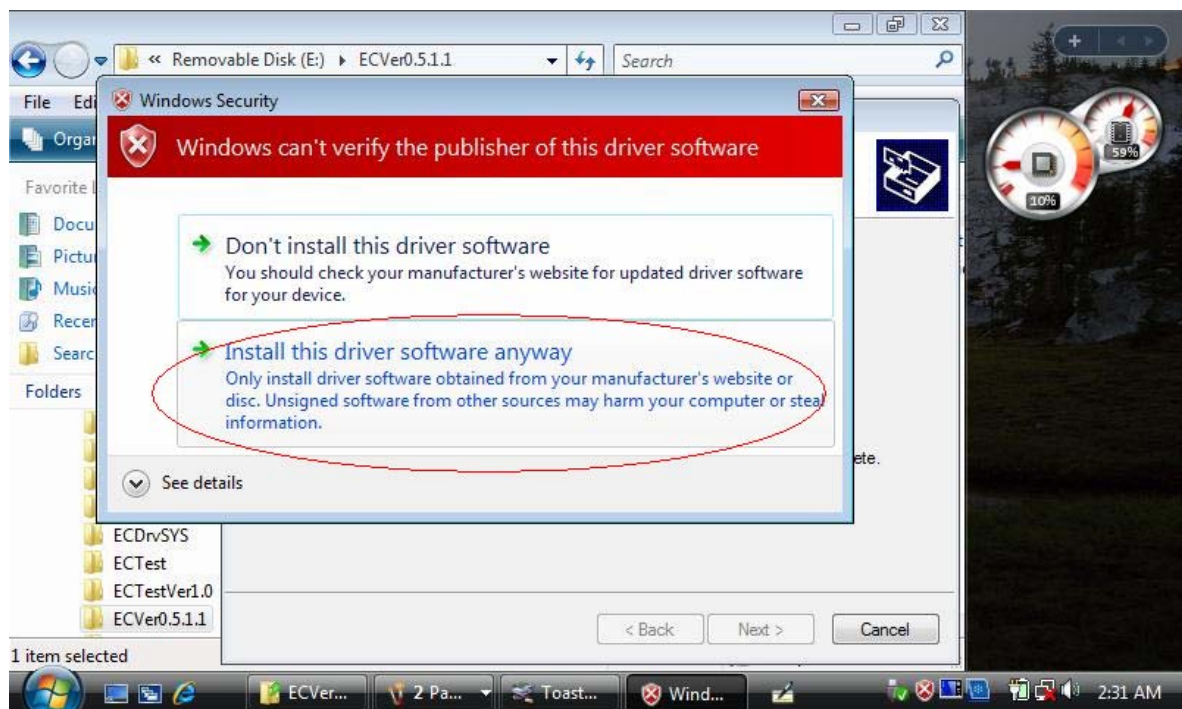
1. First of all, Please execute the DPInst.exe



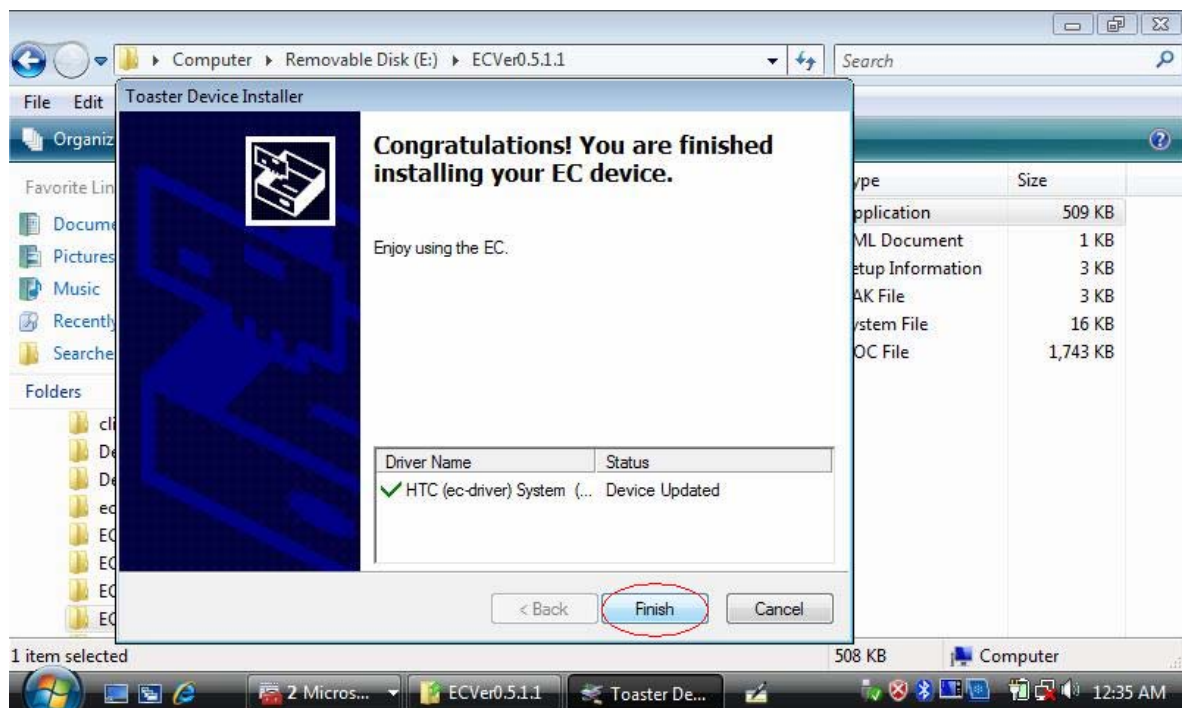
2. Press button of Next.



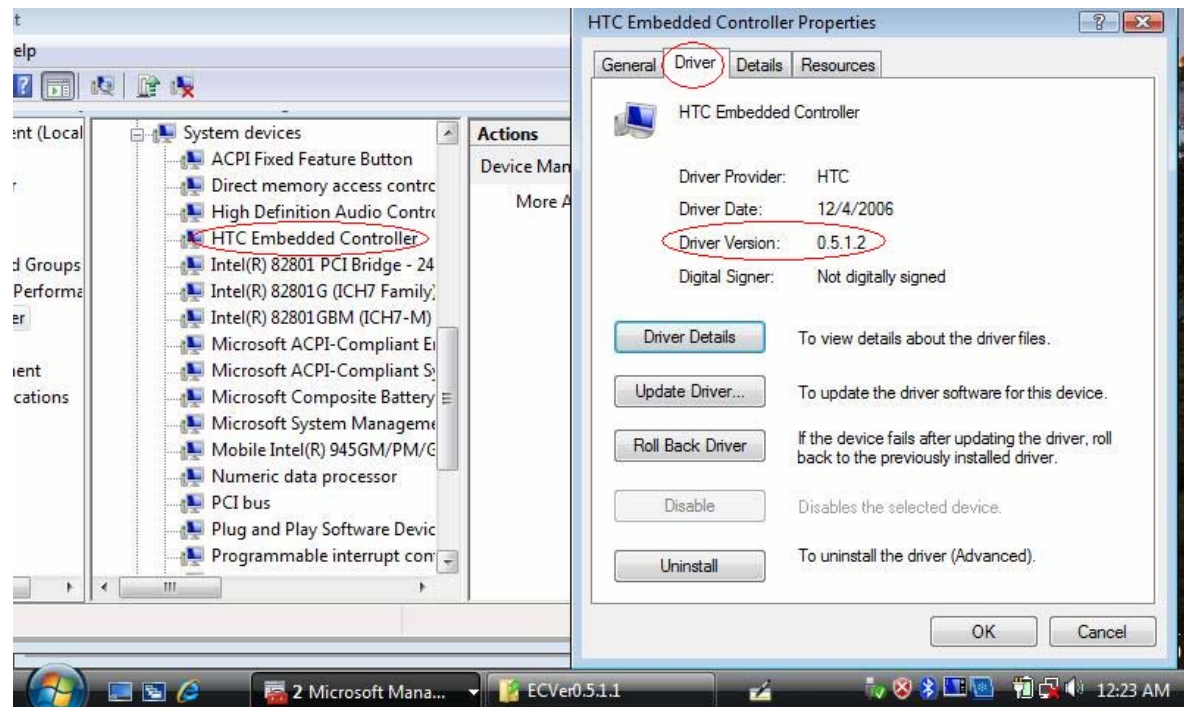
3. Select “Install this driver software anyway”



4. Press button of Finish, EC driver has installed to your system successfully.



5. After we had successfully installed EC driver, we can find a virtual device component “HTV Embedded Controller” appear on **Device Manager**.
6. Double click left button of mouse,you can check this Driver Version.



Remark:

Please install EC driver before TouchScreen and Jogger Driver  
If you have installed TouchScreen and Jogger driver , please uninstall  
ToucherScreen and Jogger driver first