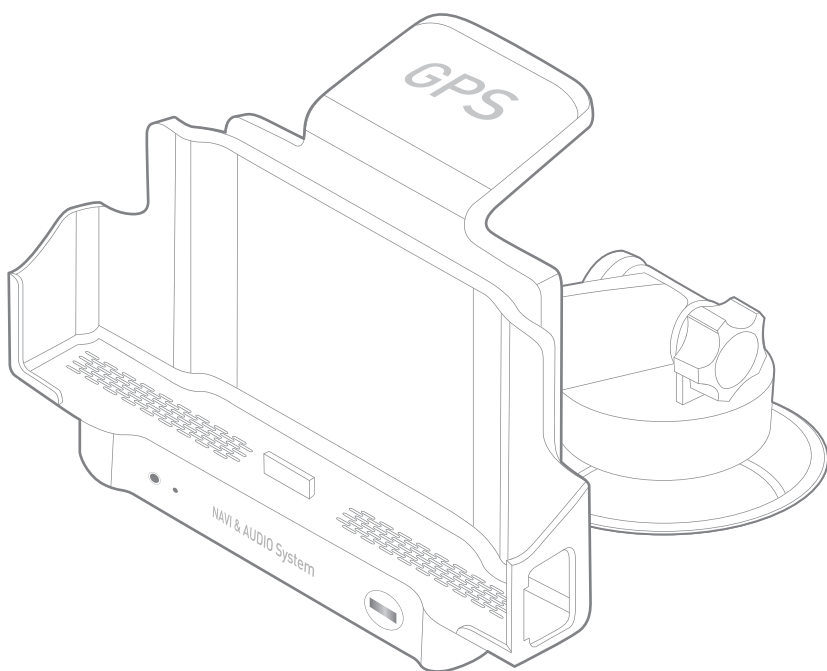


User's Guide



WIBRAIN Navigation System

MODEL NO : B1CM1

★ Troubleshooting

- Power indicator does not light up when plugged into Cigar Jack :

1. Please check fuse. (250V 8A)
2. Make sure the cigar plug and DC plug are connected well.

- Power is on but you can not hear any sound :

1. Try to turn volume control to left or right.
2. Check the volume setting of B1.

- Mount does not receive GPS signal :

1. Please check whether if USB Driver is installed correctly.
2. It takes time to get a signal from the satellite for first time
(Setup Duration for COLD START: approximately up to 5 minutes).
Signals may be blocked off by tall buildings, vehicle roof, or anti-heat film on the vehicle windows. (If you are not surrounded by these environments, please restart the program by turning it off and on again).
3. Make sure the GPS receiver is positioned horizontally with sky and try to make the GPS receiver as close as possible to the windshield. This helps the GPS receive satellite signals clearer and faster.

Tip: The GPS may need time to analyze signals from the satellite to set position. It starts when the mount runs on power through the cigar plug. Next, it analyzes its position from the satellite signal. If you are a first time user of the mount or have not used the mount for a long period of time, then the battery inside GPS module may have gotten flat. In this case, the GPS will start from the beginning, and this is called a COLD START
(It takes approximately up to 5 minutes to analyze signals)

★ Important Notes

- Do not drop or give heavy impact on the product.
- Do not put heavy weighted objects on the product.
- Please clean this product with fabric only.
- Do not open or modify without authorization. In this case, warranty does not apply.
- Please use the only cigar plug provided with the product.
- Do not use the provided cigar plug with any other device.
- Please remove cigar plug immediately from cigar jack if you see or smell strange smoke from the mount.
- Do not cover ventilating holes on the bottom of the mount. This ventilating holes help cool down the heat from the B1 and the mount itself.

1. Before using Car Mount for B1

Thank you for purchasing the Wibrain Car Mount.

Before using the Mount, please read this User's Guide carefully for more efficient use.

1.1 Copyrights

The materials on this user guide are copyright. Apart from any use permitted under the Copyright Act 1968, no part may be reproduced by any process without prior to written permission from Wibrain, Inc.

You may not distribute this User Guide to others, whether or not in electronic form, whether or not for a charge or other consideration, without prior to written consent of the materials.

1.2 Notice

- If you open or modify the mount without any notice to Wibrain, warranty will be voided even if it is within the warranty period.
- Specifications on this User's Guide may subject to change without notice.

2. Features and Specifications

2.1 Features

- GPS Receiver (SiRF-III chipset)

Built in GPS Receiver (SiRF-III chipset) provides GPS data to B1 so that user can use navigation software with B1.

- High quality stereo speakers

User can enjoy audio sound with these high quality built-in stereo speakers.

- Battery Charging

B1 battery can be charged safely by putting it on the mount.

- Audio IN/OUT Jack

Audio-IN : The Audio Jack is capable of connecting to mp3 players, PMP, or other audio devices.

Audio-OUT : You can enjoy audio sound through your Car Audio System by connecting the jack to the Audio-IN of your car audio system.

- Volume Control

You can control the volume level of the built-in speaker by turning the round volume knob on the mount.

- Pocket part open function (Patent Registered)

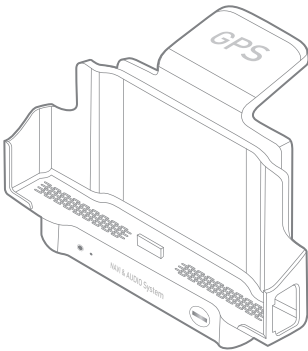
You can open the pocket part by pushing it to the more convenient position to install and remove B1 on the mount, and by pushing it back to close the pocket part of mount.

2.2 Specifications

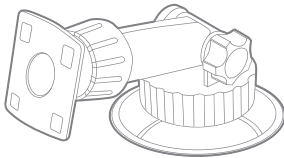
GPS Receiver	SiRF - III Chipset
Power supply	DC 12V / 24V (Power supply from car)
Charging current	4A (MAX)
Charging voltage	DC 12V $\pm 5\%$
Operating temperature	+55°C ~ -10°C
Audio output	3W x 2
Speaker	8 ohm / 3W x 2
Audio S/N	-45dB
Fuse	250V (8A)

3. Package contents and descriptions

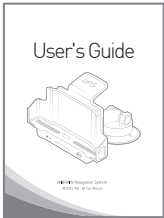
3.1 Package contents



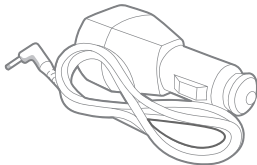
Car Mount



Suction Holder



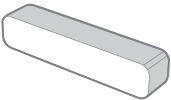
User's Guide



Cigar Plug & Extra Fuse

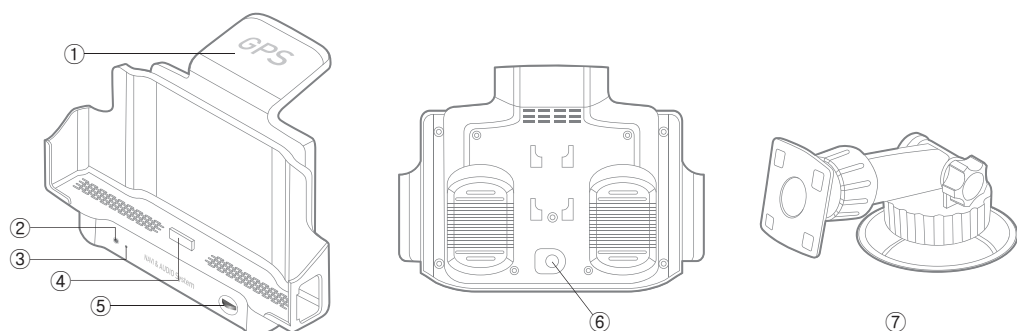


Rubber Cushion



Adhesion Sponge

3.2 Descriptions



1. GPS Receiver

Built-in GPS Receiver SiRF-III chipset.

2. Audio IN/OUT Jack

Used to connect audio IN/OUT plug.

3. Power Indicator

It lights on when the mount connected to cigar jack.

4. 24 Pin I/O Connector

I/O connection between B1 and Mount.

5. Volume Control

Used to control volume level of stereo speakers in the mount.

6. Power Jack

Used to connect to cigar jack on a car for power supply, works on DC 12V / 24V.

7. Suction Holder

Used to attach the Mount on windshield.

4. How to use

4.1 How to install and setup

1. Mount suction holder on windshield

- Insert the head of the suction holder to a holder slot on back of the mount and pull down the mount until you hear a ticking sound.
- Connect cigar plug.
- Clean and remove all dust on surface of windshield where you want to mount.
- Mount suction holder on windshield.

2. Holder Supporter & Rubber Cushion to protect from impact

- Stick Holder Supporter on dashboard to hold suction holder.
- Stick Rubber Cushion on the bottom of the mount in order to protect the device from dashboard impact if needed. (Do not cover up ventilation holes)

3. Install B1

- Push the top of the pocket part of the mount to open it.
- Connect the B1 to the 24 pin I/O connector on the mount.
- Push back again to lock pocket part until you hear the ticking sound.

4. Connect Cigar Plug

- Make sure cigar power cord connected between the mount and the cigar jack.

5. Power On

- Make sure the power indicator is on.

6. Volume control

- User may adjust volume level of built-in speaker.

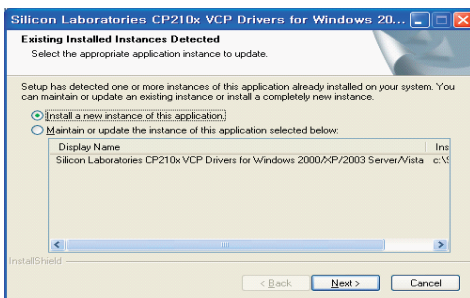
7. Install USB Driver

- In order to execute Navigation program, USB Driver must be installed on your B1. Please download USB driver CP210x_VCP_Win2k_XP_SETUP PROGRAM from website www.wibrain.com and install it on your B1.

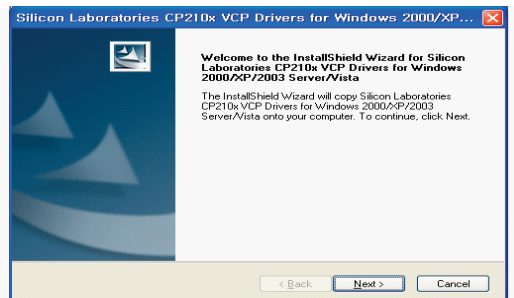
4.2 Installing Driver

- How to install USB driver for navigation software

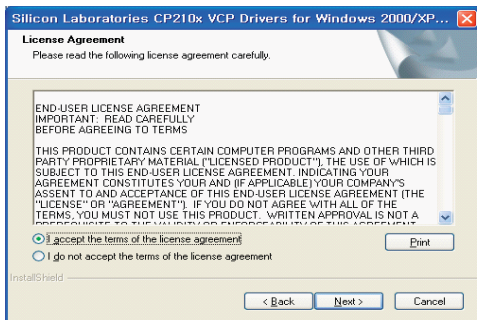
1. Download USB driver CP210x_VCP_Win2k_XP_SETUP.exe on your B1 from web site www.wibrain.com
2. Put B1 into the mount. Disregard a message if "Found a new hardware..." is shown.
3. Install the file downloaded as follows.



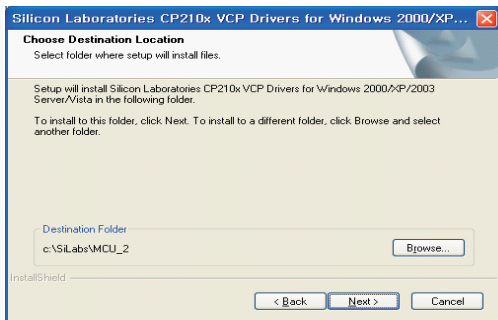
► Click on [Install ...] and [NEXT]



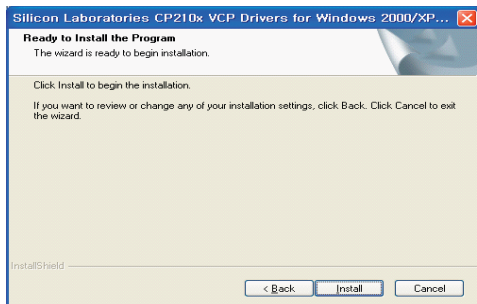
► Click on [NEXT]



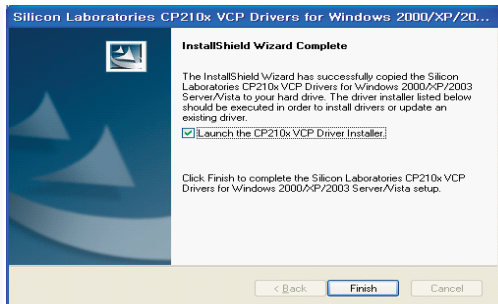
► Click on [I accept..] and [NEXT]



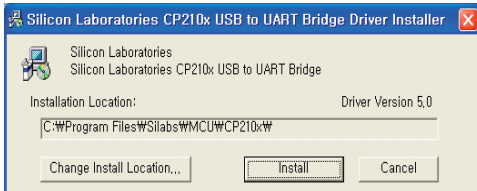
► Click on [NEXT]



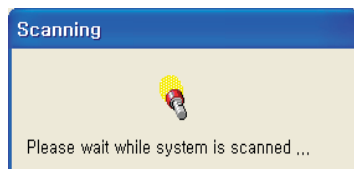
► Click on [NEXT] in sequence



► Click on [Launch the CP210x..] and [Finish]



► Click on [Install]



► It would take about 1-3 minutes.

► After the installation, please reboot the B1.

To use the GPS with your navigation software, set the COM port to 14 and the BAUD rate to 9600 bps from the navigation software.

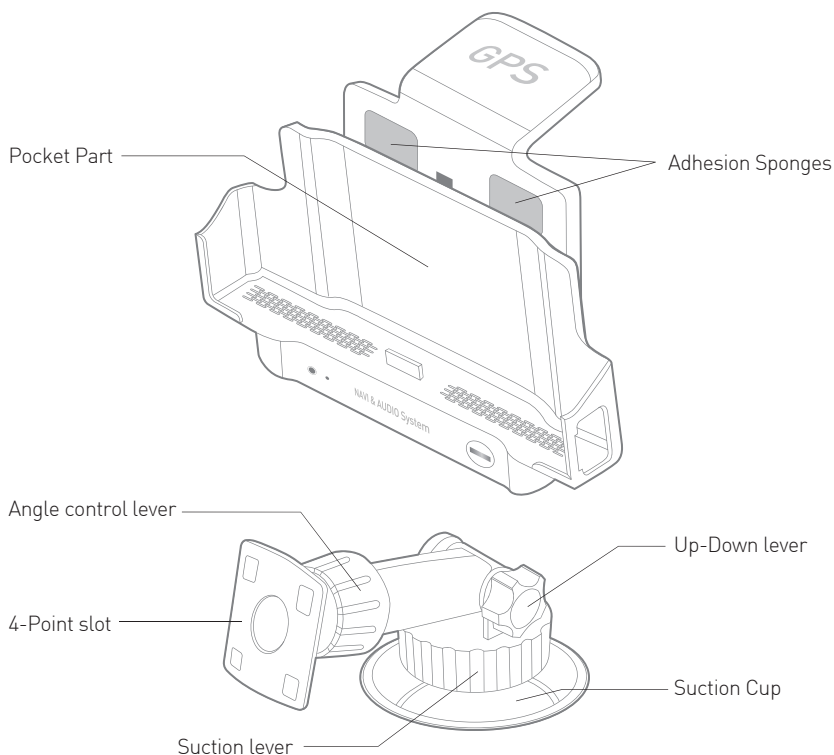
4.3 Fixation of pocket part

- The mount is designed to open the whole pocket part for easier installation of B1. Once pocket part is opened, you can get space free from windshield touch and you can insert and remove it out of the B1. (Press once to open, press again to close)

NOTE : The pocket part may open by vehicle shock while you drive, so please make sure to keep the mount laid back enough.

- If you do not want to use this open/close function, you can fix pocket part by using the two adhesion sponges provided with the mount. (Please refer to figure below)

4.4 How to use Suction Holder



Step 1. For better suction, clean all dusts and stains from the windshield.

Step 2. Turn the suction lever counter-clockwise to Maximum.

Step 3. Push and hold the suction cup on the surface of the windshield, and turn on the suction lever clockwise to maximum. In doing so, this suction holder will now be mounted on the glass and be ready for use.

- If you wish to adjust the angle of the holder, just hold the top of the mount with your hand and turn the angle control lever or up-down lever counter-clockwise, then you can place the B1 to the position you desire. And tighten the lever again.
- In order to remove suction holder from windshield, hold the mount with your hand and turn the suction lever counter-clockwise.
- As suction holder is disposable parts, warranty period for the suction holder is limited within six months.
(Warranty does not apply in case of the holder broken by user's fault)