

PP104A Series

10.4" Panel PC with
Intel® Core™ Processor



Features

- 10.4" 1024*768 TFT LCD
- Support for Intel® Core™ i7 to Celeron Processors
- DDR3 memory up to 16G
- Resistive type touch screen panel
- SATAIII SSD or HDD Storage
- Single Gigabit Ethernet
- 4 * USB 2.0/1.1 ports , 1 * HDMI Port, 1 * RS232 port

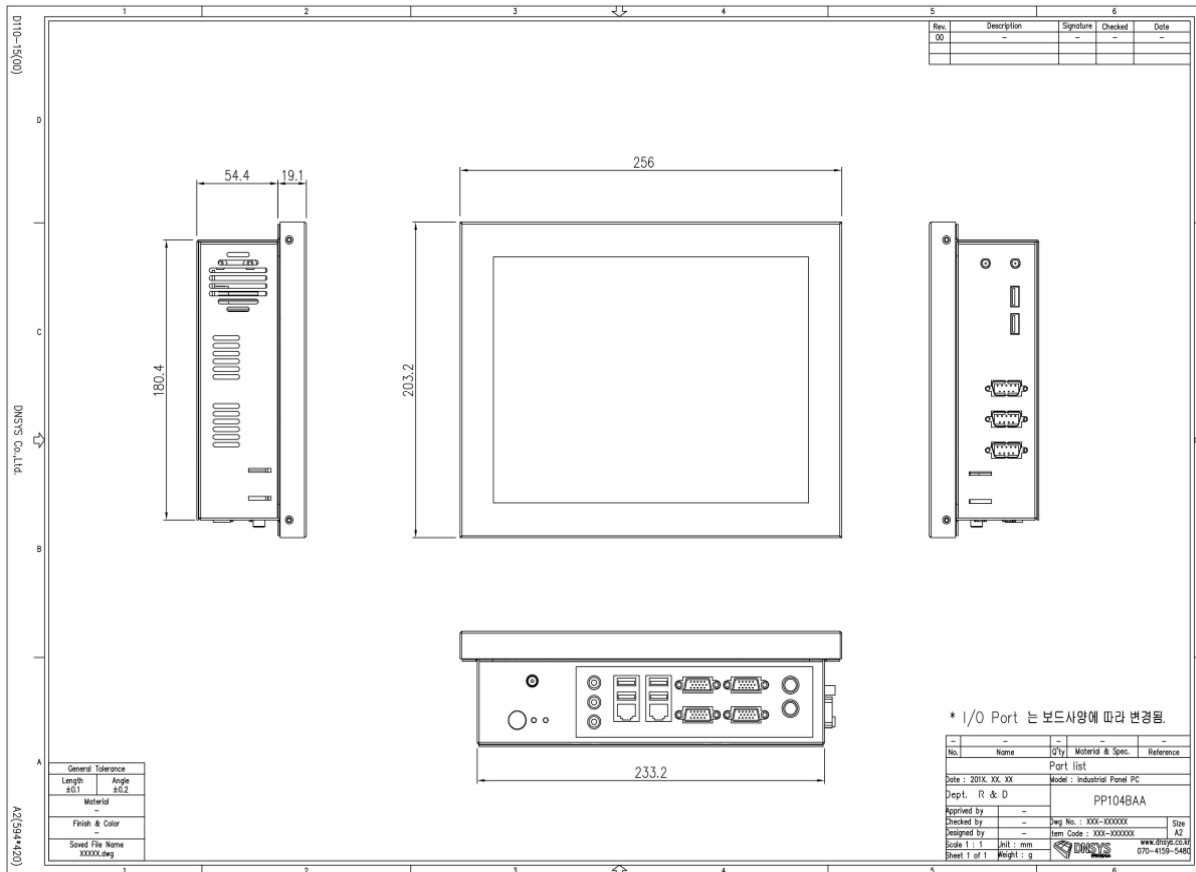
Introduction

PP104 series is a top performing and highly expandable panel PC. Equipped with a 10.4" Color TFT LCD, it features high performance, multimedia devices, connectors, and 1 expansion sockets (PCI and PCIe) for high expansion capacity. Because of its multifunctional design, the PP104 series meets demands from multimedia applications and interactive kiosks that require big displays and powerful computing performance.

Specifications

	CPU	Support for Intel® Core™ i7 processors/Intel® Core™ i5 processors Intel® Core™ i3 processors/Intel® Pentium® processors/Intel® Celeron® processors in the LGA1150 package (Supports up to 84W)
	Chipset	Intel® H81 Express Chipset
	Memory	2 x 1.5V DDR3 SO-DIMM sockets supporting up to 16 GB of system memory Support for DDR3 1600/1333 MHz memory modules
	Expansion Slots	1 x PCI Express x4 slot (Supports 25W only) 1 x Mini PCI Express x1 slot
	Storage	2 x SATA 6Gb/s connectors (SATAIII 0/1); 1 x SATA 3Gb/s device (SATAII 2) 1 x mSATA 3Gb/s connector
P	Audio	Realtek® ALC887 codec & High Definition Audio & 2/4/5.1/7.1-channel
C	Ethernet LAN	1 x Realtek® GbE LAN chip (10/100/1000 Mbit)
	LVDS	Onboard 24-bits single channel LVDS connector
	USB	2 USB 3.0/2.0 ports; 7 USB 2.0/1.1 ports
	Rear Panel I / O	2 * USB 3.0/2.0 ports 2 * USB 2.0/1.1 ports 1 * RJ-45 port 1 * Display port 1 * HDMI port 1 * DC in 2 * Audio Jacks(Line out,Mic in)
	BIOS	Use of licensed AMI EFI BIOS
	Size	10.4" TFT LCD
L	Number of Pixel	1024*768(4:3)
C	Backlight Unit	LED
D	Brightness(cd/m2)	400
	Viewing Angle	70/70/60/60 (R/L/U/D)

Dimensions



Feature Details

Networking

Four serial ports and dual 10/100/1000 Mbps Ethernet port give the PP104 advanced networking capabilities and provide the best solution for versatile applications.

Expansion

To extend its functionality, the PP104 is designed with one expansion slots for one PCI and one PCIe card, one Mini PCIe slot, six USB 2.0 (Universal Serial Bus) ports, four COM ports. With these expansion capabilities, the PP104 not only functions as an HMI, but also as a computing center around which to build your application.