

Assembly Guide for DE67-HA



V1.0

2011/10/03

1. Outlook

Front IO



Front USB

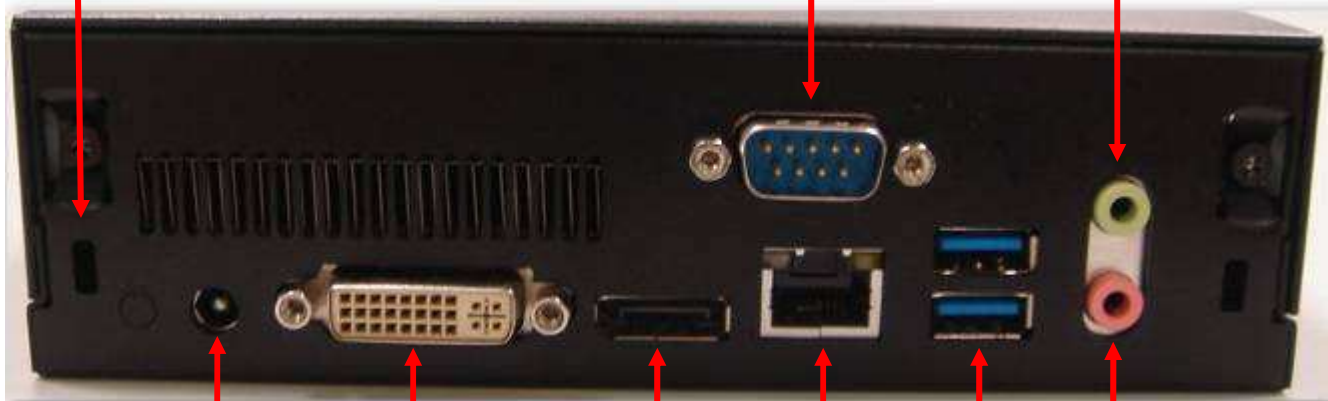
Power Button

Rear IO

Kensington
Lock hold

Com Port

Line out



DC 20v/12v

DVI

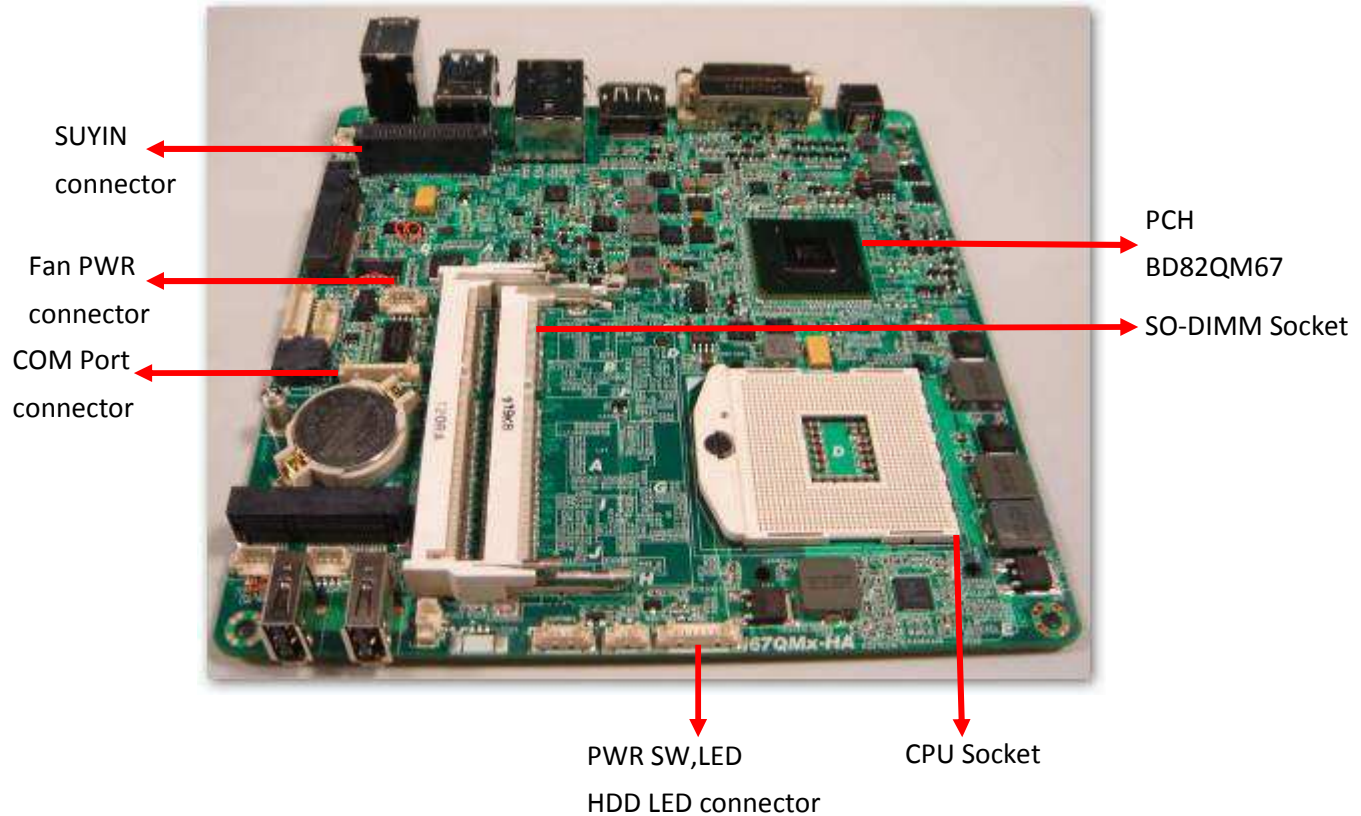
HDMI

LNA

USB 3.0

Mic in

Internal Connectors



1. Assembly Guide

1. Open Housing

1-1.

Detach 2 pcs of the rear side screw (FPH M3 screw) by the electric screw driver .
(Screwdriver torque : 5.0 ± 0.2 kgf. cm).



1-2.

Push the Upper case to remove it .

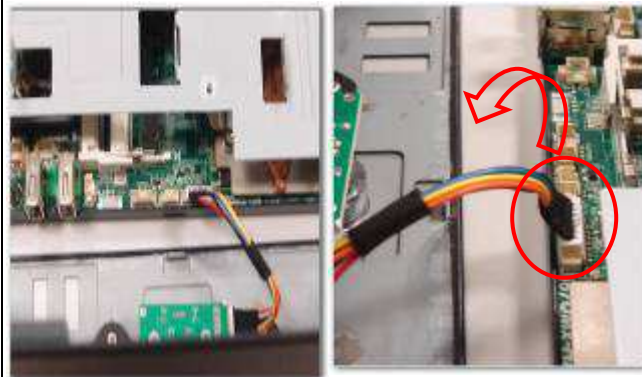
Front Side



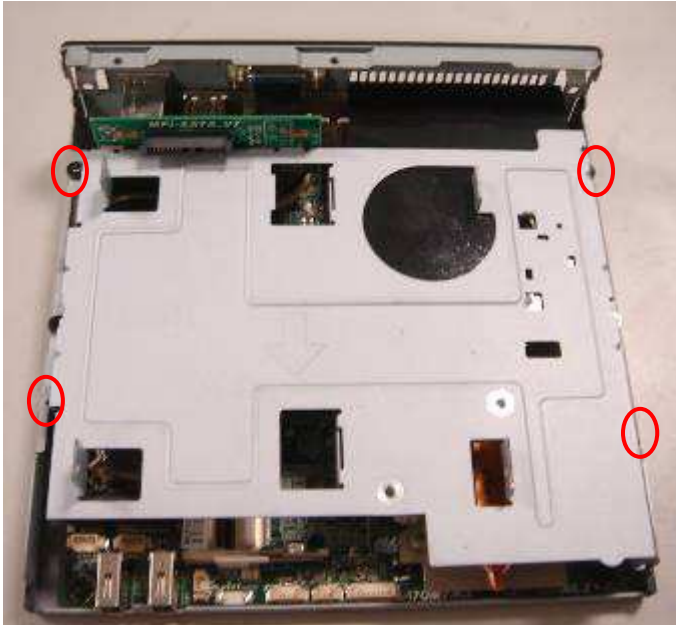
1-3. Open the top cover



1-4. Connect the wire unplug



1-5. Detach 4 pcs of the supporter screw by the screwdriver



1-6. Remove Supporter



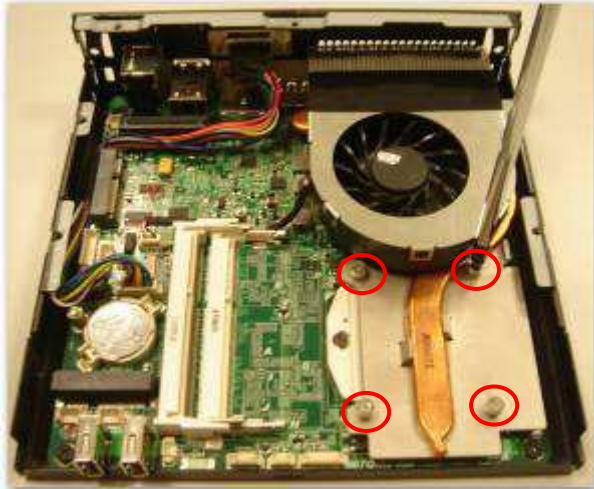
1-7. You will see the kernel of Digital Engine and supporter



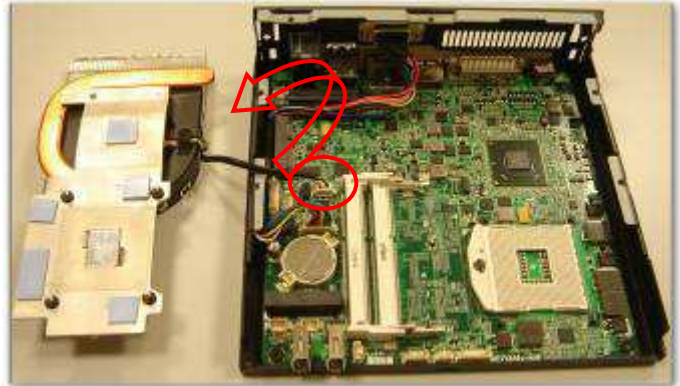
2. Install Key components

2-1 Install CPU and Memory

2-1-1 Remove the CPU cooler, Loosen 4 screw and remove CPU cooler

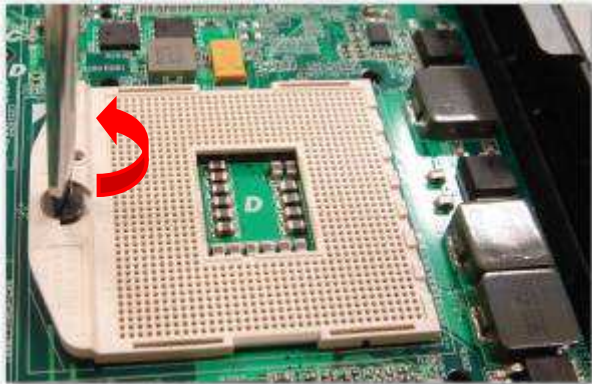


2-1-2 Remove the cooling fan modules and remove the power cord from MB



2-1-3 CPU socket unlock

Use the slotted(-) screwdriver to turn CPU socket screw toward the unlock mark (anticlockwise direction)



2-1-4 CPU installation

Locate CPU Pin1 in the socket and look for a golden arrow on CPU upper interface. Then insert the CPU into socket.



2-1-5 CPU socket lock

Use the slotted(-) screwdriver to turn CPU socket screw toward the lock mark (clockwise direction).



3. Install Key components

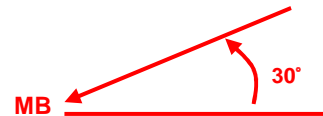
3-1 Install Memory

3-1-1.

Insert the memory on the socket as this angle.



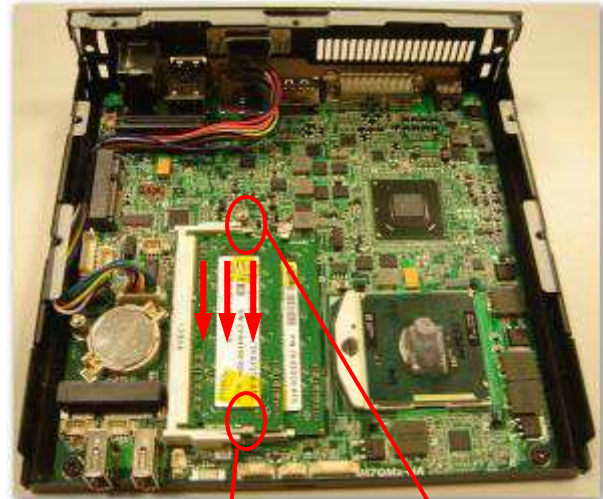
Insert DIMM as this angle



2-1-2.

Then press the DIMM as flat on the Motherboard, and you will hear the click voice.

Remarks : Install one DIMM ,Please install above slots



Make sure it clicks

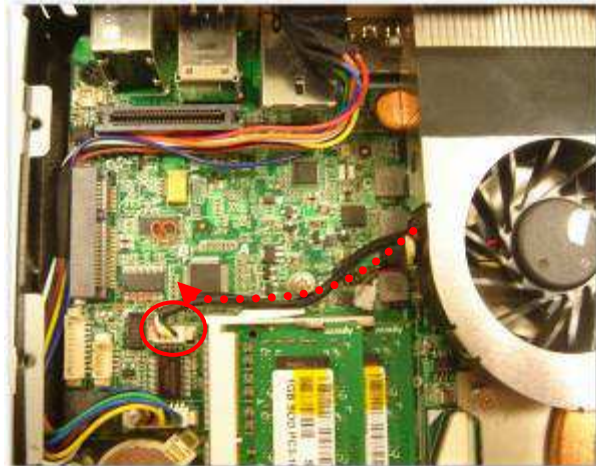
3. Install Key components

4-1 Install Cooling fan modules

4-1-1. Follow the sequence is screw 1-2-3-4 of CPU cooler to tighten the 4 screws and make sure the CPU cooler is fastened to the MB



4-1-2. The fan power cord plugged MB, Make sure the direction of fan cable accord the photo



4. Install Key components

4-1 Install HDD and ODD on Supporter

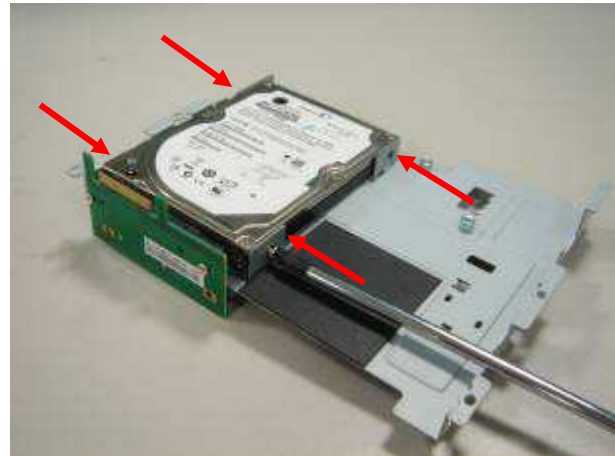
4-1-1. Put the HDD on support

Please pay attention to the direction of SATA
HDD



4-1-2. and screw HDD with 4pcs of FPH M3 screw (on both flanks)

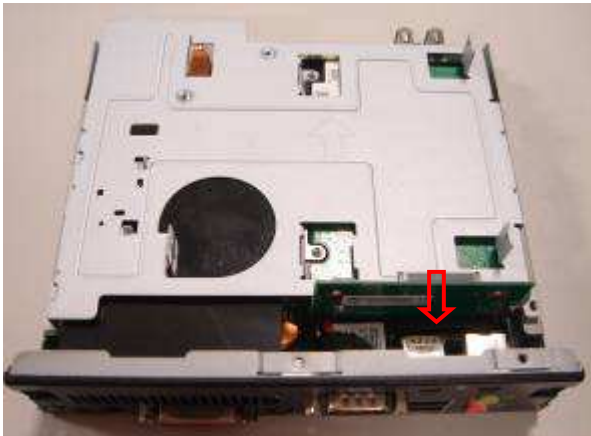
(Screwdriver torque : 2.5 ± 0.1 kgf. cm)



5-1

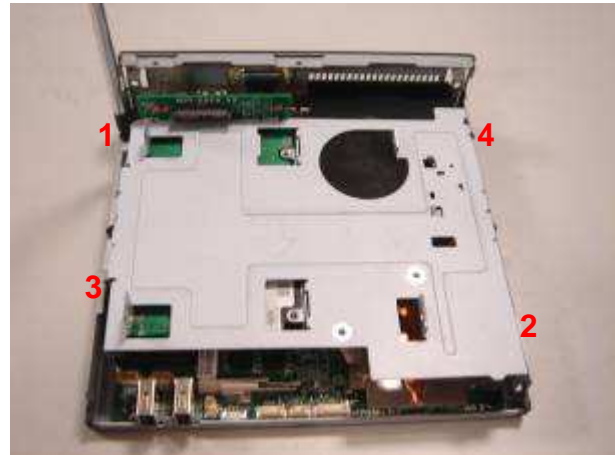
5-1-1 Assemble Supporter

Press the Supporter to fit the golden finger of DE-SATA card into the connector and make assemble tightly.



5-1-2 Assemble Supporter

Tighten 4 pcs of M3 screws. The operation sequence is screw 1-2-3-4.



5-1-3 Connect the wire plug



5 .Top Cover and cable management assembly

5-1 Screw the upper case



Assemble top cover as this angle



5-1-2 Assemble Top case accord the photo








5-1-3 Assemble Top case accord the photo



5-1-4 Screw 2pcs of M3 screw at rear side
(Screwdriver torque : 5.0 ± 0.2 kgf. cm)



2. Table of Screw and Torque

No.	Screw Photo	Position	Q'ty	Screw spec.	Torque	Screw driver spec.
1		Rear side	2	FPH M3- L5	5±0. 2 kgf-cm	⊕ Phillips #2
2		HDD Front Panel	4	FPH M3- L4	2.5±0. 2 kgf-cm	⊕ Phillips #1
3		Supporter	4	FPH M3- L5	5±0. 2 kgf-cm	⊕ Phillips #2
4		MPI-SATA card	2	FPH M2.5- L4	0.7±0. 1 kgf-cm	⊕ Phillips #1
5		Slim ODD	4	FPH M2- L3	0.7±0. 1 kgf-cm	⊕ Phillips #1