

MT35

Data Acquisition Device Quick Start Guide Windows mobile 6.1



1

MT35 Spec

Hardware	
CPU	Marvell PXA310 624MHz(806M option)
Memory	512M FLASH, 256M SDRAM
OS	Windows Mobile6.1 Professional
Wireless	1.Bluetooth 2.WIFI (WLAN 802.11) 3.GPRS
GPS	Ublox The 6th Generation (option)
Wire Transmission	USB 2.0
Display	
Display	3.5" VGA LCD
Resolution	480×640
Touch screen type	Resistive
Camera	
Megapixel	5Mp
Focus	Auto-Focus
Scan Distance	5cm~30cm
Identification	No less than 13Lx when no fill light, and can identifiable in 0.3Lx with fill light
Extensibility:	
Barcode Module(1D/2D optional)	Newland: EM1300 Symbol:SE955 Honeywell: 5100
RFID:	1. 13.56MHz (14443A/B,15693) 2. UHF 900MHz 3. LF RFID (125K,134.2K option)
Extensibility:	The 2 nd ID card reader, Fingerprint Recognition, Infrared temperature measurement
RF	
RF Module	WCDMA HSDPA 3.6Mbps
GPRS	GPRS with class 10, GPRSP class B, GPRS with CS-1, CS-2, CS-3, CS-4
Physical	
Size	175mm*78mm*27mm
Battery	4500Mah, 3.7V
Weight	420g (include battery)
Work Environment	Temperature range: -20℃ ~ +50 Humidity range: +5% ~ +95%

2

Icons in the status bar and "Today" screen

Icon	Meaning	Icon	Meaning
	Signal Strength		Phone off
	Battery level		Low battery alert
	Charging		Talking
	Volume		Mute
	Call on Hold		Call Forward
	Wi-Fi connected		Edge icon
	Unread message		Data transferring
	Vibration mode		Sync error
	Data synchronization		Bluetooth enabled
	GPRS available		No SIM card
	GPRS connected		Multiple reminders
	Edge connected		Unanswered call

5

3.Operation Show

3.1 Making a call



On the standby screen, tap Phone or press the Send key to open the Phone keypad;
Tap the keypad key and then tap Talk or press Send key to dial the phone number;
To redial, tap Talk or press Send key to dial if the phone number already appears on the screen;
Tap End or press End key to end the call.

3.2 Programs



Find all the programs in your device from Menu -> Programs.
Tap and then Programs.
Then you can find the apps. For example, the camera, File Explorer, Windows Media and so on.

6

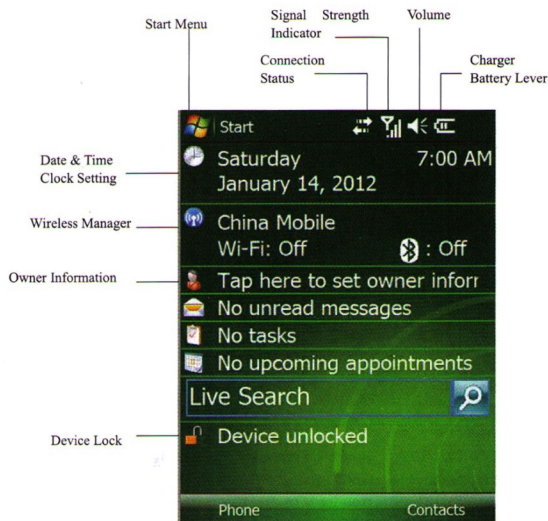
1. Appearance and Keypad



3

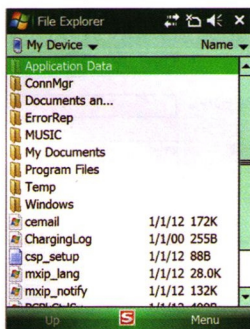
2. Main Screen

There are some important information on "Today" screen, upcoming appointment and unread messages for example.



4

3.3 File Explorer



You can manage files in the phone. However, it's recommended not to modify or delete system files. Options are available to change the displaying mode and system operation.

You can manage files in the phone. However, it's recommended not to modify or delete system files. Options are available to change the displaying mode and system operation.

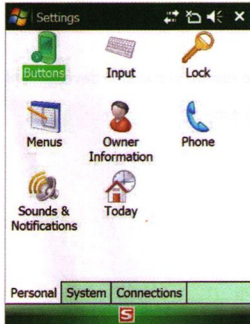
There are three ways connecting phone to computer;

1 Install Microsoft Active Sync, it is free downloading from internet;

2 Using USB Storage mode in settings and connecting menu;

3 Accessing TF card use reading card equipment;

3.4 Settings



Tap and then select Settings. There are three options.

1. Personal

In Personal, you can customize your device.

2. System

In System, you can setting functions

3. Connections

Setup connections for your device.

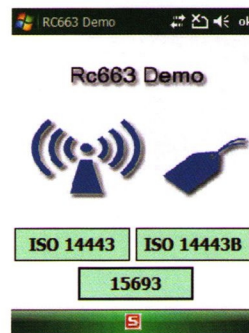
3.4 Scan Setting(optional)



If your device have scan module, then you can setting one key scan barcode in system settings. Then open excel mobile or word mobile, press the key you setting for scan, put the barcode in the scan read area, then the barcode reader can read the barcode.

When user based on terminal to do the related application development, pls contact the factory to get the source code.

3.6 RFID Reader (optional)



If your device have the RFID Reader function, pls click "start" enter explorer, default in "my document", you will find the RFID demo. open the demo program, if your card is 15693, then click 15693, then put the 13.56MHZ label card on the read area, the device can read the information of the card. Such as: type, ID, and other information of the card.

When user based on terminal to do the RFID related application development, pls contact the factory to get the source code.

7

8

4 special function declare

This terminal reserved various interface and flexible structure designed to ensure that its can meet various function customization demand. Can support RS232, the I2C, RS485 interface peripherals, can expand loading other function module, pls contact with the factory for your special requirement .

5.Common model declare

model	configuration
MT35W-S MT35 standard	Standare configuration are :bluetooth/GPS/GPRS/WIFI/4500mA battery/3.5inch touch screen/WCDMA/charger/data cable/package.
MT35W-NL Infrared 1D barcode scanner	Based on standard configuration add Infrared 1D barcode reader, support Code128, EAN-13, EAN-8, Code39, UPC-A, UPC-E, Codabar, Interleaved 2 of 5, ISBN/ISSN, Code 93 and so on ;
MT35W-SY Laser 1D barcode scanner	Based on standard configuration add Laser 1D barcode reader ,. the reader is SYMBOL SE955
MT35W-HW 2D barcode scanner	Based on standard configuration add 1D & 2D barcode reader ,the reader is HoneyWell 5100
MT35W-R3 (R6) RFID reader and writer	Based on standard configuration add 13.56MHz RFID read and write UID Reader,R3—14443A/B,R6—R14443/15693
MT35W-D6	Based on standard configuration add UBLOX GPS module

6.Special model declare (optional)

6.1 MT35 can add UHF module or LF module, as below picture :



6.1.1 UHF device declare :

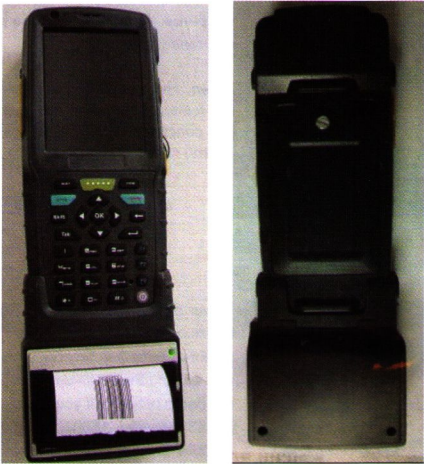
MT35 , UHF module is 900Mhz, UHF model is add a "-UHF" based on the common model .for example , if you need 1D Infrared scanner and a UHF module , the model should be MT35W-NL-UHF".

9

10

6.2 MT35 EMBEDDED PRINTER

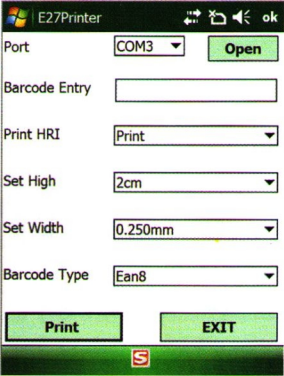
Add a thermal printer at the bottom of the MT35 device, become 形 into a integrated Handheld terminal .As below picture, can support text/barcode printe. Paper width is 5.5CM.



Printer demo application declare:

"explorer"—"my document", find the printer demo program . open the demo , as the right picture :

Set the serial port as "com3"(different state may set as "com1") , the length and width and type can be set by clients .then pls input the barcode in the "Barcode Entry" text box , click "print" , at this moment , the printer will print the barcode you have inputted in .

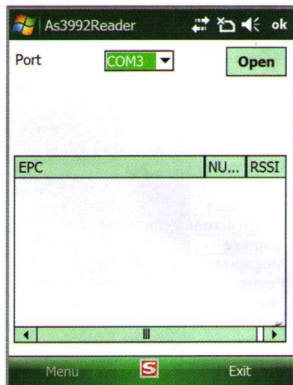


When user based on terminal to do related application development, pls contact the factory to get the souch code .

6.1.2 UHF demo application declare

"explorer"- "My Documents" find the "UHF"Demo program. After open it , pls set the serial port as " com3",click "open" start to read label. As the right picture:

When user based on terminal to do the RFID related application development, pls contact the factory to get the souch code .



When user based on terminal to do related application development, pls contact the factory to get the souch code .

6.1.3 LF device declare

There are two kinds of LF module for MT35 Products. One is 134.2KHZ , another is 125KHZ .LF model is add"-LF" based on the common model and pls note the frequency of the LF .Mark 134.2KHZ as "1",125KHZ as "2".for example ,if you need 1D Infrerad scanner and 125KHZ LF ,the model should be MT35W-NL-LF2.

6.1.4 LF demo application declare

Same as the UHF demo application declare, "explorer"- "My Documents" find the "LF"Demo program. After open it , pls set the serial port as " com3",click "open" start to read label. As the right picture

When user based on terminal to do the RFID related

application development, pls contact the factory to get the souch code

When user based on terminal to do related application development, pls contact the factory to get the souch code

